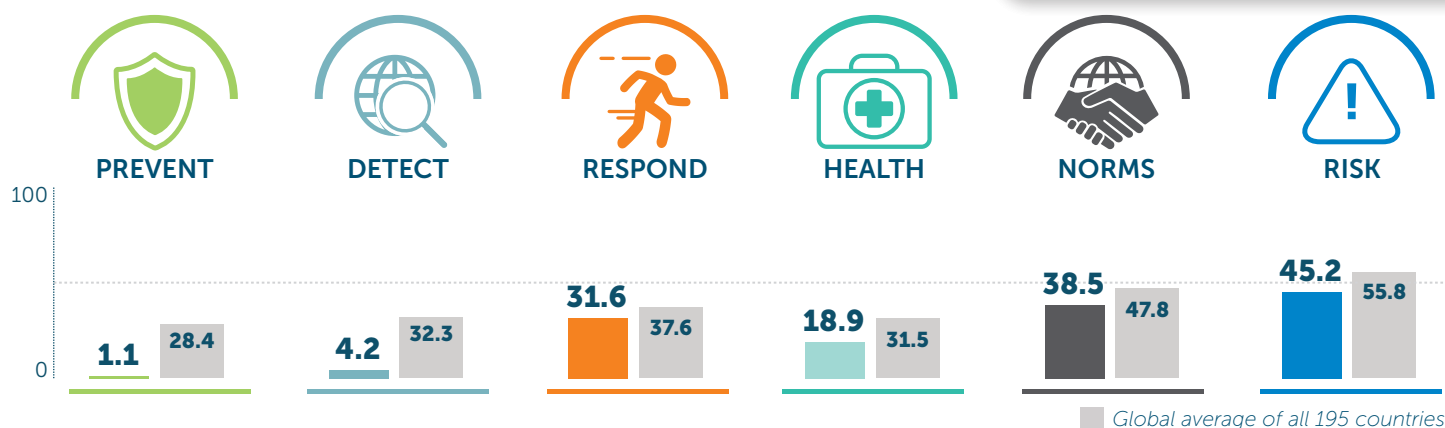


Solomon Islands

23.3 Index Score

180/195



	2019 SCORE	2021 SCORE	2021 GLOBAL AVERAGE
PREVENTION	1.1	1.1	28.4
Antimicrobial resistance (AMR)	0	0	45.3
Zoonotic disease	6.7	6.7	19.8
Biosecurity	0	0	18.7
Biosafety	0	0	20.9
Dual-use research and culture of responsible science	0	0	2.6
Immunization	0	0	63.3
DETECTION AND REPORTING	4.2	4.2	32.3
Laboratory systems strength and quality	0	0	44.9
Laboratory supply chains	0	0	15.9
Real-time surveillance and reporting	0	0	34.6
Surveillance data accessibility and transparency	0	0	34.7
Case-based investigation	0	0	16.9
Epidemiology workforce	25	25	46.5
RAPID RESPONSE	25.8	31.6	37.6
Emergency preparedness and response planning	0	20.8	30.4
Exercising response plans	0	25	21.1
Emergency response operation	0	33.3	27
Linking public health and security authorities	0	0	22.1
Risk communication	25	37.5	57.9
Access to communications infrastructure	55.5	54.7	65.7
Trade and travel restrictions	100	50	39

	2019 SCORE	2021 SCORE	2021 GLOBAL AVERAGE
HEALTH SYSTEM	16.5	18.9	31.5
Health capacity in clinics, hospitals, and community care centers	20.3	37	30
Supply chain for health system and healthcare workers	16.7	16.7	28.5
Medical countermeasures and personnel deployment	0	0	10.3
Healthcare access	53.8	53.8	55.2
Communications with health-care workers during a public health emergency	0	0	10.8
Infection control practices	0	0	40.5
Capacity to test and approve new medical countermeasures	25	25	45.1
COMPLIANCE WITH INTERNATIONAL NORMS	37.3	38.5	47.8
IHR reporting compliance and disaster risk reduction	50	50	58.5
Cross-border agreements on public and health emergency response	50	50	50
International commitments	15.6	31.3	56.1
JEE and PVS	0	0	18.7
Financing	41.7	33.3	35.2
Commitment to sharing of genetic and biological data and specimens	66.7	66.7	68.4
RISK ENVIRONMENT	45.7	45.2	55.8
Political and security risk	73	68.2	58.1
Socio-economic resilience	60	51.9	60.9
Infrastructure adequacy	8.3	16.7	50.2
Environmental risks	50.5	53.1	54.7
Public health vulnerabilities	36.6	36.3	55.3

Scores are normalized (0-100, where 100 = most favorable)