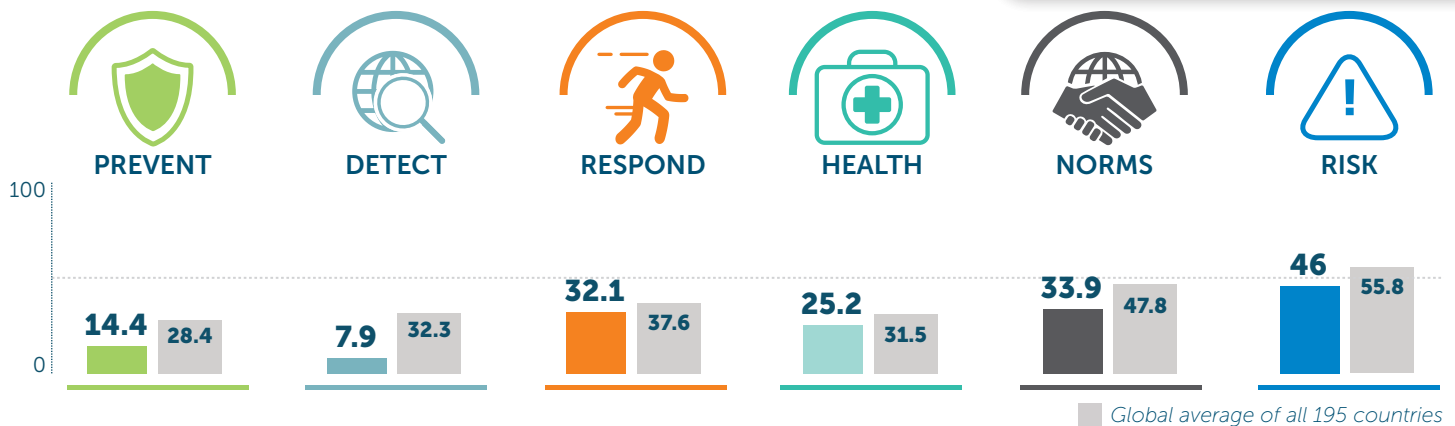


São Tomé and Príncipe

26.6 Index Score

158/195



	2019 SCORE	2021 SCORE	2021 GLOBAL AVERAGE
PREVENTION	0	14.4	28.4
Antimicrobial resistance (AMR)	0	8.3	45.3
Zoonotic disease	0	2.8	19.8
Biosecurity	0	0	18.7
Biosafety	0	0	20.9
Dual-use research and culture of responsible science	0	0	2.6
Immunization	0	75	63.3
DETECTION AND REPORTING	5.8	7.9	32.3
Laboratory systems strength and quality	0	37.5	44.9
Laboratory supply chains	0	0	15.9
Real-time surveillance and reporting	25	0	34.6
Surveillance data accessibility and transparency	10	10	34.7
Case-based investigation	0	0	16.9
Epidemiology workforce	0	0	46.5
RAPID RESPONSE	29.4	32.1	37.6
Emergency preparedness and response planning	0	20.8	30.4
Exercising response plans	0	37.5	21.1
Emergency response operation	0	0	27
Linking public health and security authorities	0	0	22.1
Risk communication	50	66.7	57.9
Access to communications infrastructure	55.5	49.8	65.7
Trade and travel restrictions	100	50	39

	2019 SCORE	2021 SCORE	2021 GLOBAL AVERAGE
HEALTH SYSTEM	10.9	25.2	31.5
Health capacity in clinics, hospitals, and community care centers	21.7	21.7	30
Supply chain for health system and healthcare workers	0	0	28.5
Medical countermeasures and personnel deployment	0	0	10.3
Healthcare access	54.5	54.5	55.2
Communications with health-care workers during a public health emergency	0	0	10.8
Infection control practices	0	100	40.5
Capacity to test and approve new medical countermeasures	0	0	45.1
COMPLIANCE WITH INTERNATIONAL NORMS	34.7	33.9	47.8
IHR reporting compliance and disaster risk reduction	50	50	58.5
Cross-border agreements on public and health emergency response	0	0	50
International commitments	25	28.1	56.1
JEE and PVS	0	25	18.7
Financing	66.7	33.3	35.2
Commitment to sharing of genetic and biological data and specimens	66.7	66.7	68.4
RISK ENVIRONMENT	44.7	46	55.8
Political and security risk	56.2	62.7	58.1
Socio-economic resilience	55	54.7	60.9
Infrastructure adequacy	25	25	50.2
Environmental risks	41.4	41.2	54.7
Public health vulnerabilities	46.1	46.5	55.3

Scores are normalized (0–100, where 100 = most favorable)