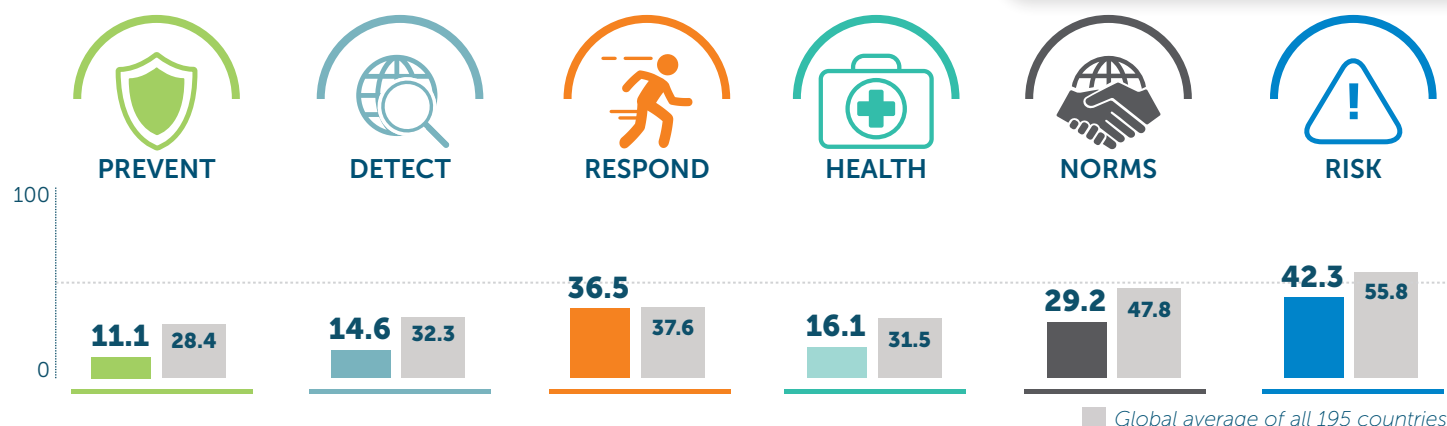


Papua New Guinea

25 Index Score

174/195



	2019 SCORE	2021 SCORE	2021 GLOBAL AVERAGE
PREVENTION	8.4	11.1	28.4
Antimicrobial resistance (AMR)	0	16.7	45.3
Zoonotic disease	0.1	0.1	19.8
Biosecurity	0	0	18.7
Biosafety	0	0	20.9
Dual-use research and culture of responsible science	0	0	2.6
Immunization	50	50	63.3
DETECTION AND REPORTING	18.8	14.6	32.3
Laboratory systems strength and quality	0	0	44.9
Laboratory supply chains	0	0	15.9
Real-time surveillance and reporting	37.5	12.5	34.6
Surveillance data accessibility and transparency	0	0	34.7
Case-based investigation	0	0	16.9
Epidemiology workforce	75	75	46.5
RAPID RESPONSE	34.2	36.5	37.6
Emergency preparedness and response planning	16.7	33.3	30.4
Exercising response plans	0	0	21.1
Emergency response operation	33.3	33.3	27
Linking public health and security authorities	0	0	22.1
Risk communication	37.5	87.5	57.9
Access to communications infrastructure	52	51.3	65.7
Trade and travel restrictions	100	50	39

	2019 SCORE	2021 SCORE	2021 GLOBAL AVERAGE
HEALTH SYSTEM	16	16.1	31.5
Health capacity in clinics, hospitals, and community care centers	20.8	20.8	30
Supply chain for health system and healthcare workers	16.7	16.7	28.5
Medical countermeasures and personnel deployment	0	0	10.3
Healthcare access	49.7	50.2	55.2
Communications with health-care workers during a public health emergency	0	0	10.8
Infection control practices	0	0	40.5
Capacity to test and approve new medical countermeasures	25	25	45.1
COMPLIANCE WITH INTERNATIONAL NORMS	38.9	29.2	47.8
IHR reporting compliance and disaster risk reduction	50	0	58.5
Cross-border agreements on public and health emergency response	50	50	50
International commitments	25	25	56.1
JEE and PVS	0	0	18.7
Financing	41.7	33.3	35.2
Commitment to sharing of genetic and biological data and specimens	66.7	66.7	68.4
RISK ENVIRONMENT	41.8	42.3	55.8
Political and security risk	54	53.4	58.1
Socio-economic resilience	48.1	48.1	60.9
Infrastructure adequacy	16.7	16.7	50.2
Environmental risks	62.3	65	54.7
Public health vulnerabilities	28.2	28.2	55.3

Scores are normalized (0–100, where 100 = most favorable)