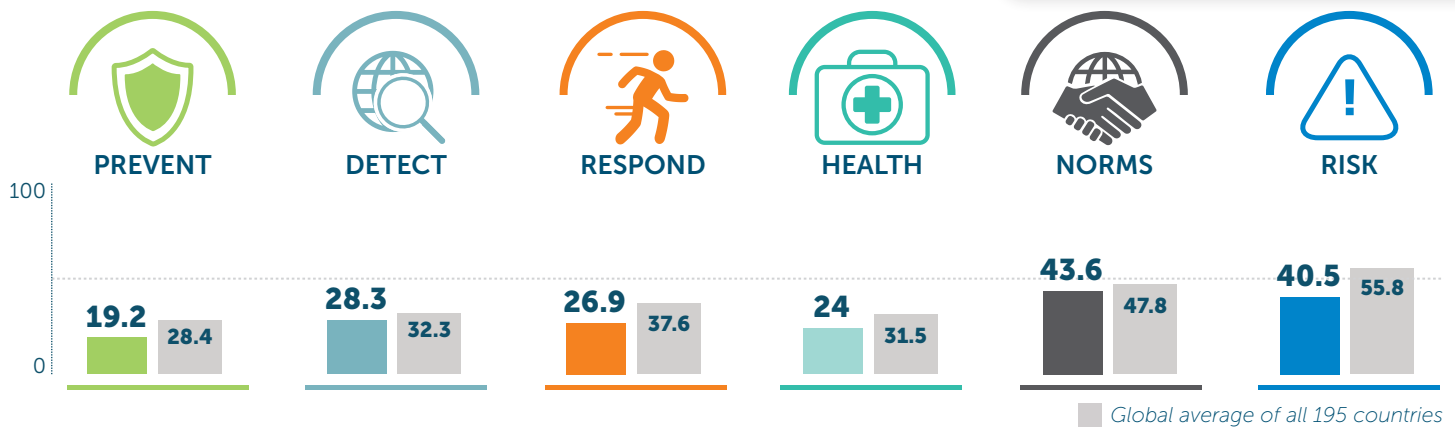


Mozambique

30.4 Index Score

130/195



	2019 SCORE	2021 SCORE	2021 GLOBAL AVERAGE
PREVENTION	15.1	19.2	28.4
Antimicrobial resistance (AMR)	33.3	33.3	45.3
Zoonotic disease	7.1	7	19.8
Biosecurity	0	0	18.7
Biosafety	0	0	20.9
Dual-use research and culture of responsible science	0	0	2.6
Immunization	50	75	63.3
DETECTION AND REPORTING	24.2	28.3	32.3
Laboratory systems strength and quality	50	50	44.9
Laboratory supply chains	0	0	15.9
Real-time surveillance and reporting	50	50	34.6
Surveillance data accessibility and transparency	20	20	34.7
Case-based investigation	0	25	16.9
Epidemiology workforce	25	25	46.5
RAPID RESPONSE	30.2	26.9	37.6
Emergency preparedness and response planning	0	0	30.4
Exercising response plans	0	25	21.1
Emergency response operation	33.3	33.3	27
Linking public health and security authorities	0	0	22.1
Risk communication	50	66.7	57.9
Access to communications infrastructure	52.9	38.1	65.7
Trade and travel restrictions	75	25	39

	2019 SCORE	2021 SCORE	2021 GLOBAL AVERAGE
HEALTH SYSTEM	24	24	31.5
Health capacity in clinics, hospitals, and community care centers	18	18	30
Supply chain for health system and healthcare workers	16.7	16.7	28.5
Medical countermeasures and personnel deployment	0	0	10.3
Healthcare access	58.3	58.3	55.2
Communications with health-care workers during a public health emergency	0	0	10.8
Infection control practices	0	0	40.5
Capacity to test and approve new medical countermeasures	75	75	45.1
COMPLIANCE WITH INTERNATIONAL NORMS	41	43.6	47.8
IHR reporting compliance and disaster risk reduction	50	50	58.5
Cross-border agreements on public and health emergency response	50	50	50
International commitments	12.5	28.1	56.1
JEE and PVS	25	25	18.7
Financing	41.7	41.7	35.2
Commitment to sharing of genetic and biological data and specimens	66.7	66.7	68.4
RISK ENVIRONMENT	43.1	40.5	55.8
Political and security risk	52.3	35.7	58.1
Socio-economic resilience	29.8	29.4	60.9
Infrastructure adequacy	41.7	41.7	50.2
Environmental risks	57.5	60.2	54.7
Public health vulnerabilities	34.3	35.7	55.3

Scores are normalized (0-100, where 100 = most favorable)