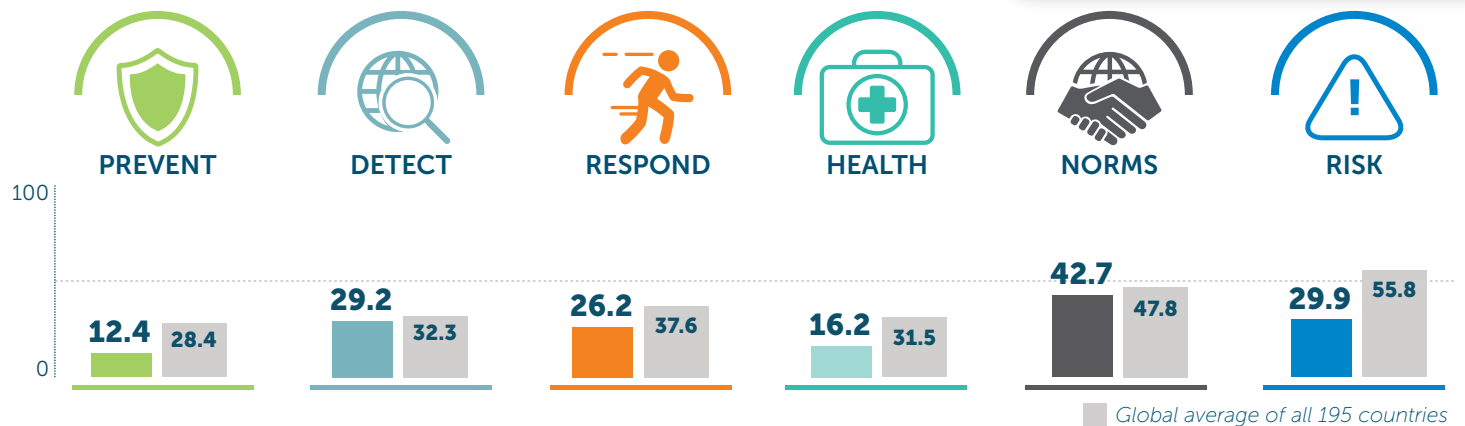


Congo (Democratic Republic)

26.1 Index Score

167/195



Global average of all 195 countries

	2019 SCORE	2021 SCORE	2021 GLOBAL AVERAGE
PREVENTION	12.4	12.4	28.4
Antimicrobial resistance (AMR)	8.3	8.3	45.3
Zoonotic disease	12.1	12.1	19.8
Biosecurity	4	4	18.7
Biosafety	0	0	20.9
Dual-use research and culture of responsible science	0	0	2.6
Immunization	50	50	63.3
DETECTION AND REPORTING	29.2	29.2	32.3
Laboratory systems strength and quality	37.5	37.5	44.9
Laboratory supply chains	0	0	15.9
Real-time surveillance and reporting	25	25	34.6
Surveillance data accessibility and transparency	0	0	34.7
Case-based investigation	62.5	62.5	16.9
Epidemiology workforce	50	50	46.5
RAPID RESPONSE	29.8	26.2	37.6
Emergency preparedness and response planning	4.2	20.8	30.4
Exercising response plans	25	25	21.1
Emergency response operation	0	0	27
Linking public health and security authorities	0	0	22.1
Risk communication	41.7	54.2	57.9
Access to communications infrastructure	37.4	33.6	65.7
Trade and travel restrictions	100	50	39

Scores are normalized (0–100, where 100 = most favorable)

	2019 SCORE	2021 SCORE	2021 GLOBAL AVERAGE
HEALTH SYSTEM	16.2	16.2	31.5
Health capacity in clinics, hospitals, and community care centers	18.5	18.5	30
Supply chain for health system and healthcare workers	16.7	16.7	28.5
Medical countermeasures and personnel deployment	0	0	10.3
Healthcare access	53	53	55.2
Communications with health-care workers during a public health emergency	0	0	10.8
Infection control practices	0	0	40.5
Capacity to test and approve new medical countermeasures	25	25	45.1
COMPLIANCE WITH INTERNATIONAL NORMS	42.2	42.7	47.8
IHR reporting compliance and disaster risk reduction	50	50	58.5
Cross-border agreements on public and health emergency response	50	50	50
International commitments	28.1	31.3	56.1
JEE and PVS	25	25	18.7
Financing	33.3	33.3	35.2
Commitment to sharing of genetic and biological data and specimens	66.7	66.7	68.4
RISK ENVIRONMENT	26.4	29.9	55.8
Political and security risk	6.2	22.1	58.1
Socio-economic resilience	33.1	33	60.9
Infrastructure adequacy	0	0	50.2
Environmental risks	60.2	62	54.7
Public health vulnerabilities	32.4	32.5	55.3