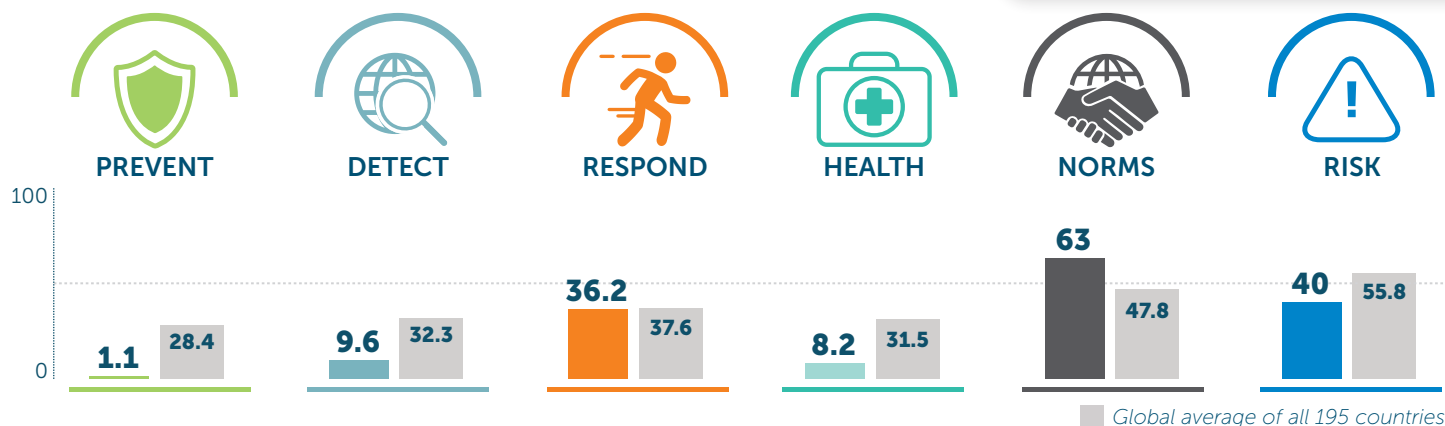


# Congo (Brazzaville)

26.3 Index Score

162/195



	2019 SCORE	2021 SCORE	2021 GLOBAL AVERAGE
<b>PREVENTION</b>	<b>9.5</b>	<b>1.1</b>	<b>28.4</b>
Antimicrobial resistance (AMR)	0	0	45.3
Zoonotic disease	7.1	6.7	19.8
Biosecurity	0	0	18.7
Biosafety	0	0	20.9
Dual-use research and culture of responsible science	0	0	2.6
Immunization	50	0	63.3
<b>DETECTION AND REPORTING</b>	<b>4.2</b>	<b>9.6</b>	<b>32.3</b>
Laboratory systems strength and quality	0	0	44.9
Laboratory supply chains	0	0	15.9
Real-time surveillance and reporting	25	37.5	34.6
Surveillance data accessibility and transparency	0	20	34.7
Case-based investigation	0	0	16.9
Epidemiology workforce	0	0	46.5
<b>RAPID RESPONSE</b>	<b>28</b>	<b>36.2</b>	<b>37.6</b>
Emergency preparedness and response planning	0	20.8	30.4
Exercising response plans	0	25	21.1
Emergency response operation	0	33.3	27
Linking public health and security authorities	0	0	22.1
Risk communication	37.5	70.8	57.9
Access to communications infrastructure	58.5	53.4	65.7
Trade and travel restrictions	100	50	39

Scores are normalized (0–100, where 100 = most favorable)

	2019 SCORE	2021 SCORE	2021 GLOBAL AVERAGE
<b>HEALTH SYSTEM</b>	<b>8.2</b>	<b>8.2</b>	<b>31.5</b>
Health capacity in clinics, hospitals, and community care centers	2.6	2.6	30
Supply chain for health system and healthcare workers	0	0	28.5
Medical countermeasures and personnel deployment	0	0	10.3
Healthcare access	54.5	54.5	55.2
Communications with health-care workers during a public health emergency	0	0	10.8
Infection control practices	0	0	40.5
Capacity to test and approve new medical countermeasures	0	0	45.1
<b>COMPLIANCE WITH INTERNATIONAL NORMS</b>	<b>54.2</b>	<b>63</b>	<b>47.8</b>
IHR reporting compliance and disaster risk reduction	100	100	58.5
Cross-border agreements on public and health emergency response	50	50	50
International commitments	75	78.1	56.1
JEE and PVS	0	50	18.7
Financing	33.3	33.3	35.2
Commitment to sharing of genetic and biological data and specimens	66.7	66.7	68.4
<b>RISK ENVIRONMENT</b>	<b>39.2</b>	<b>40</b>	<b>55.8</b>
Political and security risk	31.7	32.9	58.1
Socio-economic resilience	45.8	45.8	60.9
Infrastructure adequacy	41.7	41.7	50.2
Environmental risks	50.5	53	54.7
Public health vulnerabilities	26.2	26.6	55.3